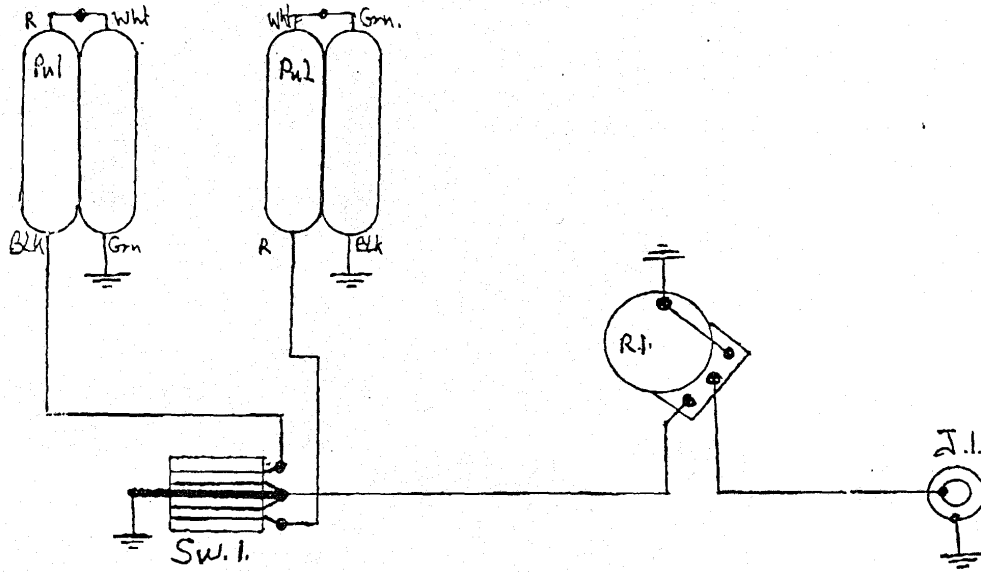
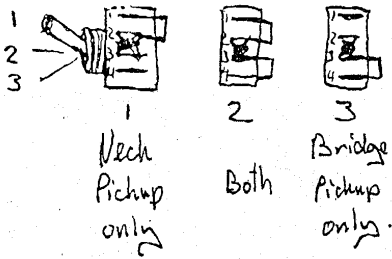


Washburn N4 Wiring Diagram.

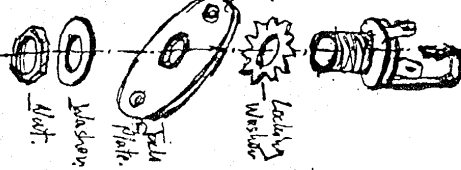


Parts : PU.1 = Seymour Duncan SH-1-U Rythum/Neck pickups
 PU.2 = Bill Lawrence L500 Lied / Bridge pickup.
 R1 = 500k Ω potentiometer = Volume control
 SW1 = Switchcraft $\frac{1}{4}$ size 3 position Laminate type,
 J1 = $\frac{1}{4}$ mono input jack.

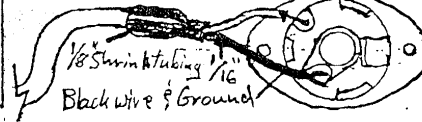
Switch Function :



Jack preassembly :



Jack prewire :



8-14-95 R.D.E.